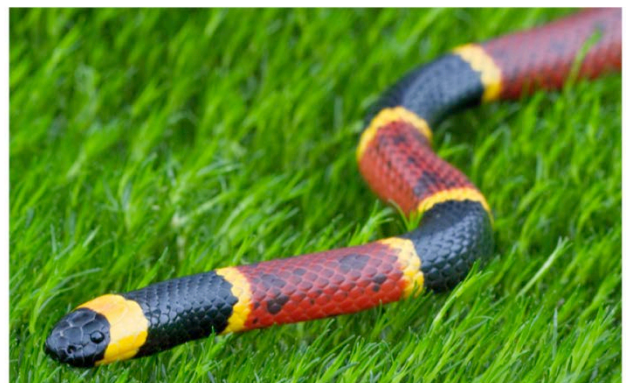
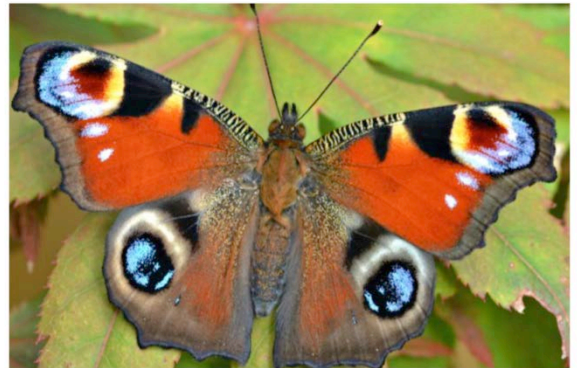




Wild Art!

Patterns in Nature

If you look carefully at the nature around you, you will see all sorts of patterns. Animals coats are often highly patterned — take a look at these examples!



Make your own animal pattern collage



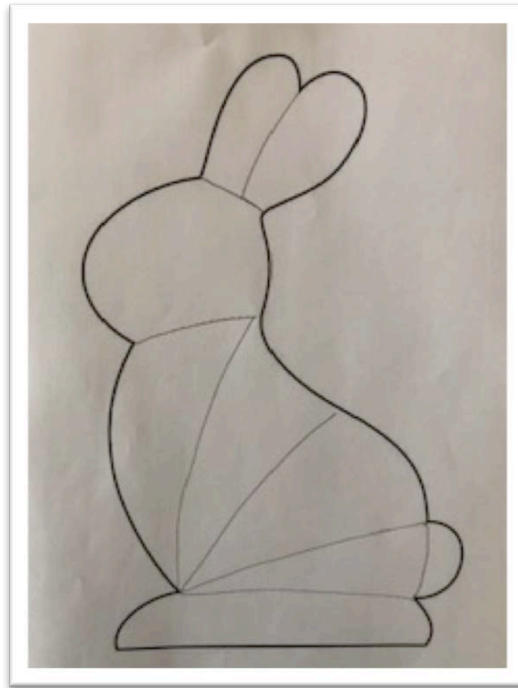
You will need:

- Scissors
- 1 sheet of plain A4 paper – any colour but a dark colour works well
- A glue stick
- 2 copies of a simple outline of an animal (to fit A4 paper – you can find examples on <http://clipart-library.com/animal-outlines.html>)
- scraps of patterned paper (wallpaper, wrapping paper, pages from magazines, crafting paper)

Make your own animal pattern collage

Instructions:

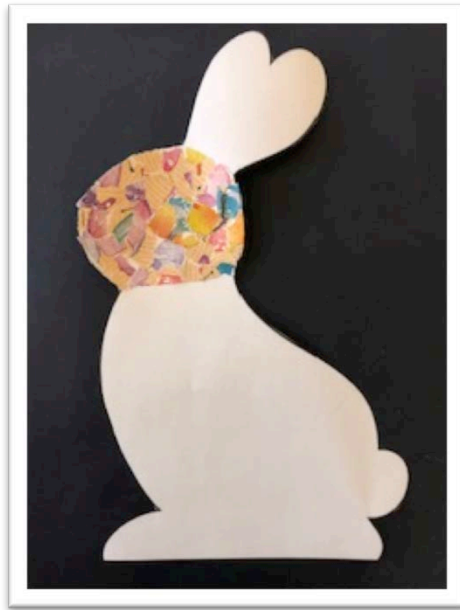
- 1) Print out 2 copies of a simple animal shape e.g. elephant, rhino, lion, dolphin, eagle
- 2) Cut around the outline of one of the copies and put to one side
- 3) Divide the picture of the animal on the 2nd sheet into sections (e.g. head, top half of body, bottom half of body, legs, tail) and then cut out each separate piece



- 4) Choose a different patterned paper for each piece of the animal. Carefully tear the patterned paper into small pieces and use a glue stick to completely cover each piece of the animal. Remember that each piece of the animal should have a different pattern.

Make your own animal pattern collage

5) When you finished each piece of your animal, stick it onto the whole animal shape that you cut out at the start – as if you're putting the animal back together!



6) Once the whole animal is covered in patterned paper, stick it onto the plain sheet of paper (a dark background works really well). Alternatively you could paint a background to represent the animal's natural habitat.

Good luck! Send us photos of your artwork to nicola@tram.co.uk!